

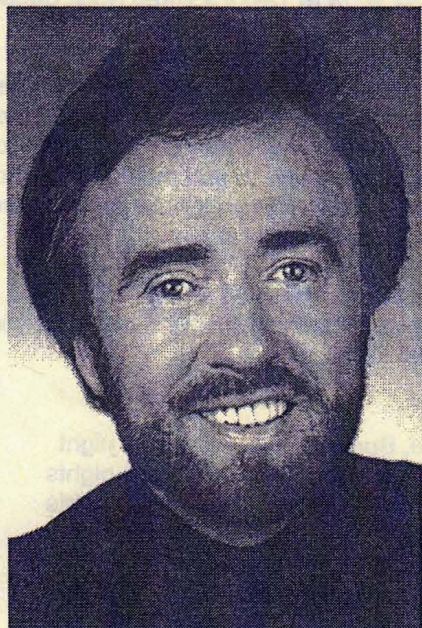
# Cahal Dunne's Musical Journeys of Ireland

Choose from 2 dates—June 25 to July 5, 2012 or Sep 17 to 27, 2012

Air & Land Cost: \$3,189.00 from JFK or Newark or \$3,289.00 from Pittsburgh

Single room supplement \$445.00 per person

Airline departure taxes of \$460.00 are additional and subject to change until ticketed  
Travel Protection Plan (optional but highly recommended): \$179 per person



CAHAL DUNNE

## Program Highlights

*Personally escorted by Cahal Dunne*

*4\* hotels—2-night stays in most locations*

*Bus leaves at 10:00 am most mornings*

*Sightseeing program every day*

*Four lively evening dinner/shows -*

*Bunratty Castle Medieval Banquet*

*Dublin Cabaret dinner & show*

*2 private concerts with Cahal*

*Visit many singing pubs*

*Galway City and Connemara Touring*

*Blarney Castle*

*Kinsale stay with leisure time—the gourmet capital of Ireland*

*Dingle Peninsula Tour*

*Dublin City Tour*

*Adare & Bunratty Folk Park - Limerick and Clare*

*Plenty of leisure time & shopping opportunities*

## Your Tour Includes

- Round trip flights from JFK, Newark or Pittsburgh. Flights can be arranged from most Florida gateways and other major cities—contact CIE Tours
- 9 nights in superior first class hotel accommodation (4 \*) with twin-bedded rooms & private bath in Bunratty, Galway, Dingle, Kinsale and Dublin
- 9 full Irish breakfasts & 9 dinners
- Transport by luxury motorcoach with a driver/guide for 10 days
- Admission fees to: Bunratty Folk Park, Cliffs of Moher, Blarney Castle, and Powerscourt House & Gardens
- Service charges, government taxes and portage of 1 checked suitcase/bag per person
- Carry-on flight bag, ticket wallet, luggage strap and tags (1 carry-on bag per person permitted)

## Please Note:

Airfares and airline departure taxes are subject to change until they are paid in full and tickets have been issued

For full details of trip and reservations contact:

Joe Fallon

CIE Tours International, 10 Park Place, P O Box 1965, Morristown NJ 07962-1965

Tel: (800) 223-6508 or (973) 292-3899 Ext. 4326

For any special attention, call Cahal Dunne at Tel: (724) 449-8821

This tour is subject to CIE Tours' booking guidelines and cancellation penalties.  
Refer to General Conditions on our website (cietours.com) or our current brochure.

## OUTLINE ITINERARY

### Day 1: UNITED STATES TO SHANNON

Depart your hometown and fly overnight across the Atlantic.

### Day 2: SHANNON ARRIVAL & BUNRATTY

After customs and immigration formalities at Shannon Airport, your CIE Tours driver/guide will welcome you and drive you to visit Bunratty Folk Park, with traditional cottages from different parts of Ireland. Check in to your hotel and relax or explore the Bunratty Village Mills or Durty Nelly's Pub. This evening join the fun and feasting at a medieval-style banquet in Bunratty Castle.

### Day 3: CLIFFS OF MOHER & GALWAY BAY

Drive to the coast of Clare to view the Cliffs of Moher. This impressive wall of rock rises to almost 700 feet above the foaming Atlantic breakers. Continue through the hills of the Burren Country and around Galway Bay to your Galway hotel. In the afternoon, enjoy free time to browse around the city center.

### Day 4: CONNEMARA & "QUIET MAN" TOUR

Travel west of Galway through the scenic Connemara with hills and sparkling lakes. Stop in the village of Cong where "The Quiet Man" movie was made in 1952 with John Wayne and Maureen O'Hara. Take a walking tour to discover places featured in the production. Return to Galway and enjoy free time before dinner.

### Day 5: LIMERICK & ADARE

Travel south through Limerick and stop for photos in Adare, a charming village with lots of thatched houses and colorful gardens. After a photo stop, journey into the mountainous country of Kerry and west into Tralee. Stop for some free time before heading through County Kerry and out along the lovely Dingle Peninsula to the town of Dingle for your 2-night stay.

### Day 6: DINGLE PENINSULA

Discover more of the Dingle Peninsula's beauty as you drive to the western tip where the scenery becomes wilder as the influence of the Atlantic Ocean strengthens. Stop for photos at the best vantage points and return to Dingle for free time.

### Day 7: KILLARNEY TO KINSALE

Drive to Killarney for a look around this famous town and continue through lovely mountain scenery around Glengarriff and Bantry Bay. Continue through peaceful fishing towns to Kinsale, an attractive harbor town with brightly painted houses.

### Day 8: BLARNEY CASTLE & KINSALE AT LEISURE

Drive a short distance to Blarney and climb to the battlements of Blarney Castle to kiss the famous "Stone of Eloquence" and shop at the Blarney Woollen Mills. Return to Kinsale for a leisurely afternoon to browse around this charming town. In the evening join your fellow travelers for dinner in the hotel.

### Day 9: KINSALE TO DUBLIN

Drive north through Counties Cork and Tipperary, stopping for photos at the majestic rock of Cashel. View rich farmlands as you head to your hotel in an upmarket suburb of Dublin. This evening enjoy dinner and a lively show at Taylor's Three Rock Cabaret.

### Day 10: DUBLIN HIGHLIGHTS & IRISH CABARET

Drive south to visit Powerscourt House and Gardens. The stately house is set in extensive gardens with views of the Wicklow Mountains. In the afternoon tour central Dublin to see prominent historic buildings, gardens and monuments and famous Georgian streets. Return to your hotel for a farewell dinner with Cahal and your fellow travelers.

### Day 11: RETURN TO THE UNITED STATES

Transfer to Dublin Airport in plenty of time to check in for your flight back to the United States.

#### Your Hotels:

Bunratty Castle Hotel, Bunratty	1 night
Radisson Blu Hotel, Galway	2 nights
Skellig Hotel, Dingle	2 nights
Trident Hotel, Kinsale	2 nights
Fitzpatrick Castle Hotel, Killiney (June) or	
Royal Marine Hotel, Dun Laoghaire (Sept)	2 nights

To reserve space a deposit check for \$500.00 or \$679.00 (to include travel insurance) is required  
Make check payable to CIE Tours International and mail to:

CIE Tours International, Attn: Joe Fallon, 10 Park Place, P. O. Box 1965, Morristown NJ 07962-1965

Departure Date: June 20  Sep 19   
 Departure Airport: JFK  Newark  Pittsburgh  Other  Contact CIE for prices from other cities

Insurance Premium: Yes  No

Name #1 *Exactly As Shown on Passport:*

First \_\_\_\_\_ Middle \_\_\_\_\_ Last \_\_\_\_\_

Passport No. \_\_\_\_\_ Expiry Date \_\_\_\_\_ Date of Birth \_\_\_\_\_ Male  Female

Name #2 *Exactly As Shown on Passport:*

First \_\_\_\_\_ Middle \_\_\_\_\_ Last \_\_\_\_\_

Passport No. \_\_\_\_\_ Expiry Date \_\_\_\_\_ Date of Birth \_\_\_\_\_ Male  Female

Address for all trip correspondence and documents

Street \_\_\_\_\_ City \_\_\_\_\_ State/Zip Code \_\_\_\_\_

Daytime Phone \_\_\_\_\_ Evening Phone \_\_\_\_\_

Email \_\_\_\_\_